

CERTIFIED LAND CORNER RECORDATION MAY 5 PM 1 32

DESCRIPTION OF CORNER EVIDENCE FOUND, AND ORIGINAL RECORD (If known)

Found standard G.L.O. monument, 1" iron pipe with 2 1/2" brass cap projecting 0.3 feet above ground, slight bent as stamped as shown below.

1/4 S.31 S.6 T.14N R.70W. T.13N. 6th P.M.

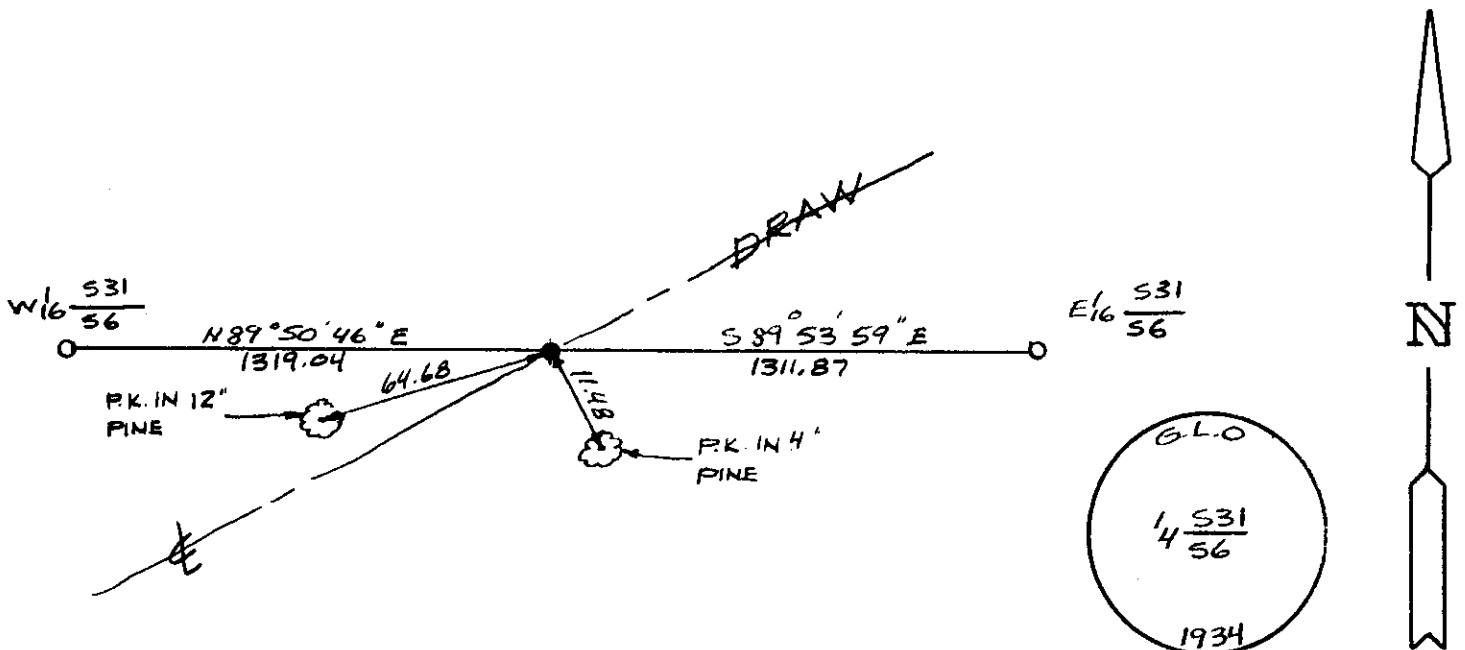
G.L.O. Record: Set iron post 3' long, 1" diameter with original stone deposit alongside with brass cap stamped as shown below.

DESCRIPTION OF MONUMENT AND ACCESSORIES ESTABLISHED TO PERPETUATE THE ORIGINAL LOCATION OF THIS CORNER:

At the corner: Not remonumented.

Accessories : Set P.K. in 12" pine 64.68 feet Southwest of monument. Set P.K. in 4" pine 11.48 feet Southeast of monument.

SKETCH, WITH COURSE AND DISTANCE TO ADJACENT CORNER IF DETERMINED IN THIS SURVEY. (May Sketch or Paste Reproduction on Reverse Side.)



I, John A. Steil certify that I have carefully performed or reviewed the work done on the diagrammed corner as reported on this recordation form and approve the same.

Signature of Surveyor: John A. Steil

L.S. 2500 Registration No.

STATE OF WYOMING, Office of Clerk and Recorder, County of Laramie

This "corner record" was filed for record on the 5th day of May, 1988, was noted on the cross-index plat and is assigned page No. 2038, in book No. 1259.

Signature of County Official: Janet C. Whitehead

County Official

Table with columns: Cross Index No., T., R., Mer. Rows include A-3, Z-3, 13N, 14N, 70W, 70W, Mer.6th, Mer.6th, Mer., Mer., Mer., Mer.